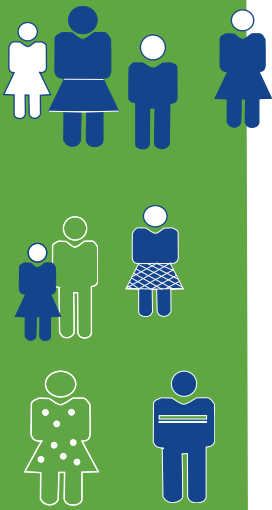


# Creating a Socially Just Workplace



Topics including race, equity, and bias are at the forefront of everyone's thoughts these days, and SATRI is ready to work with you to build the right customized training solution. Our trainers have the right combination of training, real-world experience, professionalism, and compassion to have challenging discussions in a respectful, inclusive way. We'll work with you on site, at our facility, or virtually, can accommodate groups of any size, and can develop specialized programming to meet your unique needs. Let's learn together!

## IMPLICIT BIAS

Everyone has thoughts and feelings that they carry without necessarily being aware of their presence in their minds. This workshop defines these unexamined thoughts and feelings as implicit bias and support participants in understanding the way such bias impacts factors such as access to care and health outcomes. Participants are encouraged to evaluate the role implicit bias plays in their own work, as well as to develop a plan for positive change.

## IDENTIFYING AND CONFRONTING MICROAGGRESSIONS IN THE WORKPLACE

All too often, and sometimes without intent, individuals' actions can create a hostile work environment. This workshop supports participants in identifying the differences between equity and equality, and why understanding the difference is important to an emotionally safe workplace. Participants learn through example the definition of "microaggressions," as well as the role of intersectionality, and learn ways to reduce microaggressions in the workplace.

## INTERGENERATIONAL TRAUMA

Studies have shown that trauma can be passed down from generation to generation. This workshop defines "intergenerational trauma" and explains how it differs from historical trauma. Participants review which groups have been most affected and symptoms of intergenerational trauma. They should leave with an understanding of transmission through epigenetic inheritance and how it impacts individuals and families.



**TO DISCOVER MORE ABOUT THE WAYS WE CAN HELP,** contact Jillian Gecewicz at

518.982.2135 or [Jillian.Gecewicz@northernrivers.org](mailto:Jillian.Gecewicz@northernrivers.org).